

Flat Spray Nozzles

SAP series



Material: S304

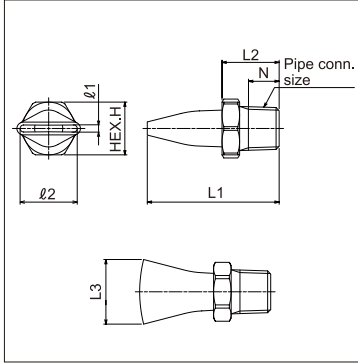
For blowers

Stainless Steel

FEATURES

- 29mm in total length (1/8M); compact enough to install in a narrow space.
- Pressure loss is minimal to enable high spray impact performance.
- Compared to conventional, general-purpose air nozzles, SAP provides larger spray coverage.

DIMENSIONS



Pipe conn. size	Outer dimensions (mm)						Mass (g)	
	HEX.H	L1	L2	L3	ℓ1	ℓ2		N
1/8M	12	29	13	14.7	1.5	13	7	10
1/4M	14	37	17.5	18.9	1.5	17	10.5	16

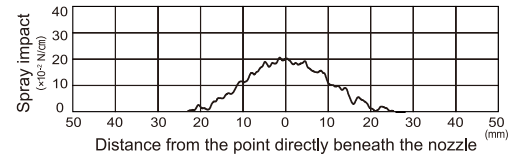
Pipe conn. size	Air consumption (ℓ/min, Normal)				
	10kPa	20kPa	30kPa	40kPa	50kPa
1/8M	120	170	208	239	266
1/4M	170	240	293	337	376

Note: Compressor air can be used.
(The above chart shows blower air consumption)

SPRAY IMPACT DISTRIBUTION

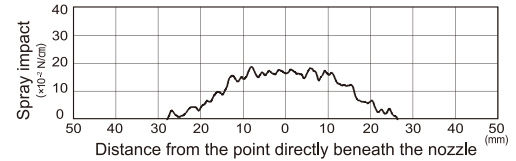
[1/8MSAP13-15S304]

at air pressure 20kPa, air consumption 170ℓ/min (Normal), spray height 100mm



[1/4MSAP17-15S304]

at air pressure 20kPa, air consumption 240ℓ/min (Normal), spray height 100mm



How to order

Please inquire or order for a specific nozzle using this coding system.

① Pipe connection size: 1/8M

1/8M SAP 13-15 S304

② Pipe connection size: 1/4M

1/4M SAP 17-15 S304

Solid Stream Jet

CCP-A series



Material: S303

For compressors

Stainless Steel

FEATURES

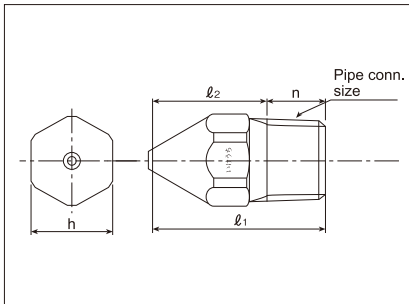
- Spraying air in a solid stream through a single orifice yields strong propagation for highly effective air blowing.
- Product lineup orifice diameters range from φ1.0 to φ2.5.
- Good cost performance ideal for use in large quantities.

Round Type



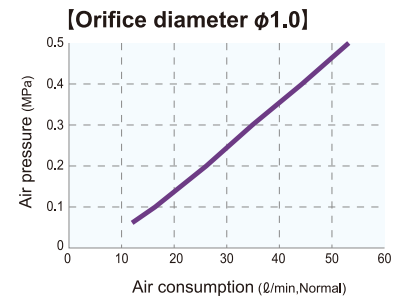
[Spray pattern]

DIMENSIONS



Pipe conn. size	Outer dimensions (mm)				Mass (g)
	ℓ1	ℓ2	h	n	
1/8M	21	14	10	7	7.2
1/4M	30	19.5	14	10.5	19

Orifice diameter code	Pipe conn. size	Air consumption (ℓ/min, Normal)					Orifice diameter (mm)
		0.1MPa	0.2MPa	0.3MPa	0.4MPa	0.5MPa	
φ1.0A		17	26	35	44	53	1.0
φ1.5A	1/8M	40	60	80	100	120	1.5
φ2.0A	1/4M	70	104	135	172	206	2.0
φ2.5A		109	162	215	268	321	2.5



How to order

Please inquire or order for a specific nozzle using this coding system.

<Example> 1/8M CCP φ1.0A S303

1/8M CCP φ1.0A S303

Pipe conn. size

- 1/8M
- 1/4M

Orifice diameter code

- φ1.0A
- φ1.5A
- φ2.0A
- φ2.5A