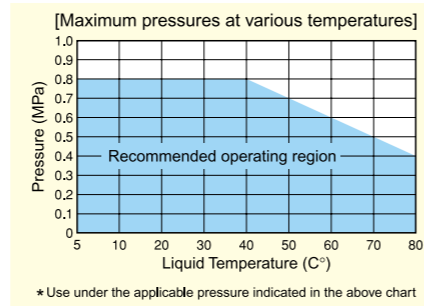
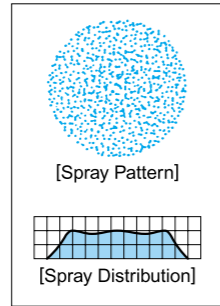


Quick-Detachable Standard Full Cone Spray Nozzles

Patented

INJJX



[Features]

- Full cone spray nozzle with a removable whirler.
- Quick installation and removal by just turning the nozzle 60° by hand.
- Easy maintenance with quick detachable nozzle.
- Nozzle bodies are color-coded by spray capacity for easy identification.

[Standard Pressure]

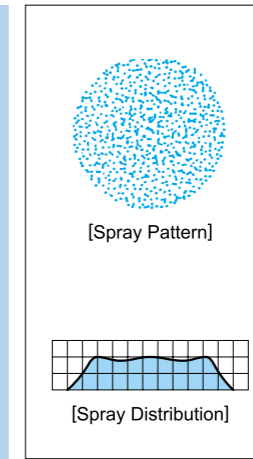
0.2MPa

[Applications]

Etching, stripping, chemical treatment
Cleaning

Ceramic Orifice and Whirler Inserted Full Cone Spray Nozzles

JUP



[Features]

- Full cone spray pattern with a round impact area and uniform distribution.
- Ceramic disc whirler and ceramic orifice forming vortex chamber provide excellent wear resistance.
- Medium spray capacity is available.

[Standard Pressure]

0.2MPa

[Applications]

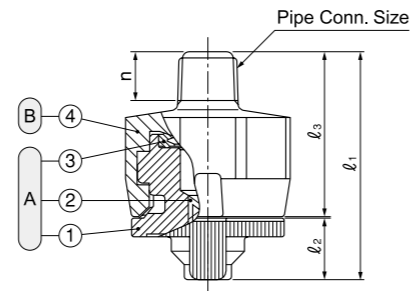
Cleaning : Gases, incinerator fumes, machinery, eliminators, screen, tanks, gravel, stones, sand, etc.

Cooling : Gases, machinery, tanks, steels, etc.

Spraying : Waste water treatment, aeration, foam breaking, dust suppression, etc.

INJJX-series

INJJX-series	
Structure	• 2-piece structure comprised of nozzle and adaptor. • Easy installation and removal by just turning the nozzle 60°.
Material	• Nozzle : PP (polypropylene) • Adaptor : PPS (polyphenylene sulfide) • Packing : FEPM



Series	Pipe Conn. Size	Dimensions(mm)						Mass (g)
		l ₁	l ₂	l ₃	n	w ₁	w ₂	
INJJX	1/8M	37	10	26.5	8	30	27	12
	1/4M	40	10	29.5	11.5	30	27	13
	3/8M	40	10	29.5	12	30	27	14

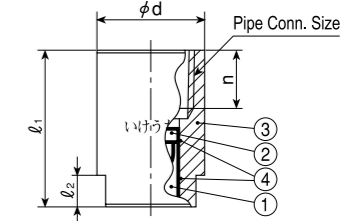
[Note] • Appearance and dimensions may differ slightly depending on materials and nozzle codes.

• INJJX series nozzles are not compatible with ISJJX series.
(The INJJX series is the successor to the ISJJX series.)

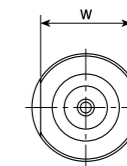
① Nozzle ② Whirler ③ Packing-FEPM
④ Adaptor

JUP-series

JUP-series (with ceramic orifice inserted)	
Structure	• One-piece structure with ceramic whirler and orifice forming vortex chamber.
Material	• Sizes 1F or smaller : B (brass) or S303 (stainless steel 303) • Sizes 1 1/2 F or larger : S316 (stainless steel 316) • Optional material : S316L



Series	Pipe Conn. Size	Dimensions(mm)					Mass(g)	
		l ₁	l ₂	w	n	phi d	B	S303 (S316)
JUP	3/8F	30	6	17	11	20	44	41
	1/2F	39	8	22	14	25	125	115
	3/4F	49	10	27	15	32	177	167
	1F	59	14	34	17	40	320	300
	1 1/2F	80	20	50	19	58	—	820



① Ceramic orifice ② Ceramic whirler
③ Body ④ Adhesive : Araldite®

[Note] Appearance and dimensions may differ slightly depending on materials and nozzle codes.

Spray Capacity Code	Pipe Conn. Size			Spray Angle			Spray Capacity (ℓ/min)							Mean Drop. Dia. (μm)	Free Pass. Dia. (mm)	Color of nozzle body			
	1/8M	1/4M	3/8M	0.05 MPa	0.2 MPa	0.5 MPa	0.03 MPa	0.05 MPa	0.1 MPa	0.15 MPa	0.2 MPa	0.3 MPa	0.5 MPa				0.7 MPa		
	010	○	○	○	60°	65°	55°	—	0.53	0.73	0.88	1.00	1.18				1.45	1.67	290
015	○	○	○	60°	65°	55°	—	0.79	1.09	1.32	1.50	1.77	2.18	2.50	1.0	Yellow			
020	○	○	○	60°	65°	55°	—	1.06	1.46	1.75	2.00	2.36	2.91	3.34			1.5	Grey	
025	○	○	○	60°	65°	55°	—	1.32	1.82	2.20	2.50	2.95	3.62	4.17	1.5	Yellow			
030	○	○	○	60°	65°	55°	—	1.59	2.18	2.63	3.00	3.54	4.36	5.00			1.5	Blue	
040	○	○	○	60°	65°	55°	—	2.12	2.91	3.51	4.00	4.72	5.81	6.67	2.0	Purple			
050	○	○	○	65°	70°	60°	—	2.65	3.64	4.38	5.00	5.90	7.27	8.34			2.0	Green	
060	○	○	○	70°	75°	65°	2.51	3.18	4.37	5.26	6.00	7.08	8.72	10.0	520	2.0			Pink

How to order Please inquire or order for a specific nozzle using this coding system.

① Complete unit

<Example> ...1/8M(PT)INJJX040PP(FEPM)+PPS

1/8M (PT) INJJX 040 PP (FEPM) + PPS					
Pipe Conn. Size: 1/8M	Thread type: (PT)	Spray Capacity Code: 040	Nozzle Material: PP	Packing Material: (FEPM)	Adaptor Material: PPS
1/4M	(NPT)	50			
3/8M		50			

② Nozzle only

<Example> ... INJJX040PP(FEPM)

INJJX 040 PP (FEPM)		
Spray Capacity Code: 040	Nozzle Material: PP	Packing Material: (FEPM)
50		

ALSO AVAILABLE!

Quick-Detachable Standard Flat Spray Nozzles
INVV series

See p.21 of this catalog.

Spray Capacity Code	Pipe Conn. Size					Spray Angle			Spray Capacity (ℓ/min)							Mean Drop. Dia. (μm)	Free Pass. Dia. (mm)
	3/8F	1/2F	3/4F	1F	1 1/2F	0.05 MPa	0.2 MPa	0.5 MPa	0.03 MPa	0.05 MPa	0.1 MPa	0.15 MPa	0.2 MPa	0.3 MPa	0.5 MPa		
	03	○					50°	60°	52°	—	1.57	2.17	2.62	3.00	3.55		
04	○					50°	60°	52°	—	2.09	2.89	3.50	4.00	4.73	5.83	470	1.4
05	○					55°	65°	55°	—	2.61	3.61	4.37	5.00	5.91	7.29	490	1.5
06		○				50°	60°	52°	2.46	3.13	4.33	5.24	6.00	7.09	8.75	470	2.0
07		○				55°	63°	55°	2.87	3.65	5.05	6.12	7.00	8.27	10.2	470	2.0
08		○				55°	65°	55°	3.28	4.18	5.78	6.99	8.00	9.46	11.7	470	2.0
10		○				60°	70°	58°	4.10	5.22	7.22	8.74	10.0	11.8	14.6	470	2.2
12		○				63°	70°	60°	4.92	6.26	8.66	10.5	12.0	14.2	17.5	600	2.3
14			○			63°	70°	60°	5.74	7.31	10.1	12.2	14.0	16.5	20.4	580	2.8
16			○			63°	70°	60°	6.56	8.35	11.6	14.0	16.0	18.9	23.3	580	2.8
18			○			70°	77°	65°	7.38	9.40	13.0	15.7	18.0	21.3	26.2	600	3.0
20			○			75°	80°	68°	8.20	10.4	14.4	17.5	20.0	23.6	29.2	600	3.0
23			○			75°	80°	68°	9.43	12.0	16.6	20.1	23.0	27.2	33.5	600	3.2
26			○			78°	83°	70°	10.7	13.6	18.8	22.7	26.0	30.7	37.9	600	3.2
30			○			78°	83°	72°	12.3	15.7	21.7	26.2	30.0	35.5	43.7	730	3.4