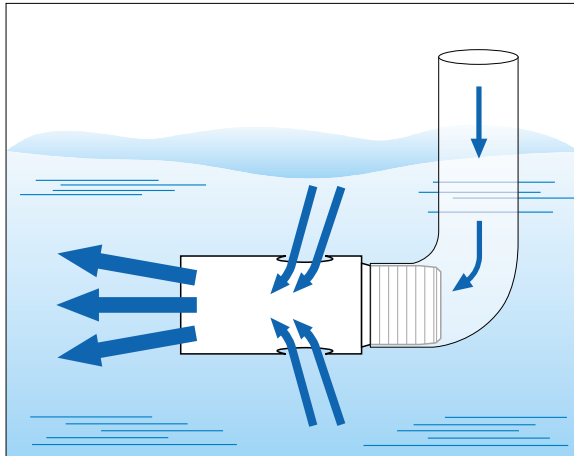


Ejector Nozzle for Solution Agitation

EJX



[Features]

- Taking in surrounding liquid, the EJX solution agitation nozzle spouts out 3-4 times more volume than the amount supplied.
- Small size and simple structure suitable for multiple-nozzle arrangement.

[Standard Pressure]

0.05MPa

[Applications]

- Solution agitation, Preventing deposition, Uniformizing concentration and pH
- Cleaning in liquids
- Submerged etching, Plating

Solid Stream

EJX-series

EJX-series	
Structure	• One-piece structure.
Material	<ul style="list-style-type: none"> • S303 (stainless steel 303), PP (polypropylene) • S304 (stainless steel 304) for sizes 1M and 1½M • PVC (polyvinyl chloride) for sizes 1M and 1½M

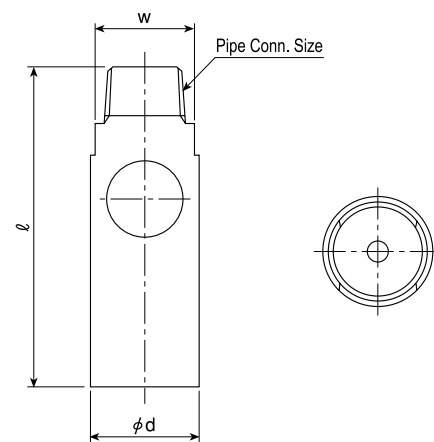
Series	Pipe Conn. Size	Dimensions(mm)			Mass(g)	
		ℓ	φd	w	PP	S303 (S304)
EJX	1/8M	30	11	11	1.3 *1	11
	1/4M	48	16	16	3.2 *1	26
	3/8M	72	24	22	10	80
	1/2M	93	31	27	20	170
	3/4M	126	42	34	48	420
	1M	172	80	60	260 *2	2,200 *3
	1½M	212	90	80	380 *2	3,200 *3

*1) Sizes 1/8M and 1/4M made of PP are injection molded.

*2) Sizes 1M and 1½M are made of PVC, not PP.

*3) Sizes 1M and 1½M are made of S304, not S303.

[Note] Appearance and dimensions may differ slightly depending on materials and nozzle codes.



Supplied Volume Code	Pipe Conn. Size	Supplied Water Volume (ℓ/min)						Outlet Water Volume (ℓ/min) [Reference value]						Free Pass. Dia. (mm)
		0.03 MPa	0.05 MPa	0.1 MPa	0.15 MPa	0.2 MPa	0.3 MPa	0.03 MPa	0.05 MPa	0.1 MPa	0.15 MPa	0.2 MPa	0.3 MPa	
1	1/8M	0.85	1.10	1.56	1.91	2.20	2.69	2.2	3.1	5.0	6.6	9.2	10	1.5
4	1/4M	3.10	4.00	5.66	6.93	8.00	9.80	8.1	11	18	24	34	38	2.8
9	3/8M	6.97	9.00	12.7	15.6	18.0	22.0	18	26	41	54	75	85	4.2
16	1/2M	12.4	16.0	22.6	27.7	32.0	39.2	33	46	72	95	134	151	5.7
30	3/4M	23.2	30.0	42.4	52.0	60.0	73.5	61	86	140	180	250	280	7.7
90	1M	69.7	90.0	127	156	180	220	180	260	410	540	760	850	13.3
160	1½M	124	160	226	277	320	392	330	460	720	950	1340	1510	17.5

How to order

Please inquire or order for a specific nozzle using this coding system.

<Example>... 3/8MEJX1-9PP

3/8M	EJX	1-	9	PP
Pipe Conn. Size			Supplied Volume Code	Material
1/8M			1	S303
1/4M			4	*S304 for 1M and 1½M
3/8M			9	PP
1/2M			16	*PP-IN for 1/8M and 1/4M
3/4M				*PVC for 1M and 1½M
1M				
1½M				