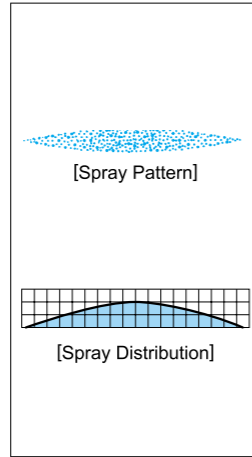


One-piece Structure Standard Flat Spray Nozzles

UVVP



[Features]

- Flat spray pattern with a mountain-shaped spray distribution having gradually tapered edges.
- UVVP series made of ultrahigh molecular weight polyethylene features high wear resistance and keep stable performance as polishing nozzles over prolonged use.

[Standard Pressure]

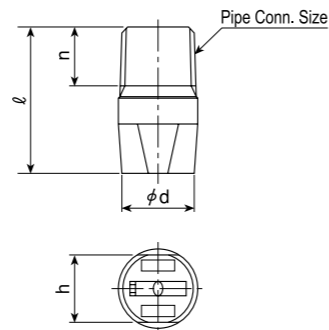
0.3MPa

[Applications]

Polishing : Liquid honing, through-hole, etc.
Others : Washing, spraying, cooling

UVVP series

UVVP series	
Structure	• Simple one-piece structure to be screwed into pipe.
Material	• UPE (ultrahigh molecular weight polyethylene)



Series	Pipe Conn. Size	Dimensions(mm)				Mass(g)
		ℓ	h	n	φd	
UVVP	1/4M	26	12	10.5	13.7	2.5

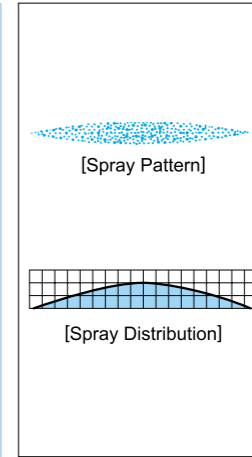
[Note] • Appearance and dimensions may differ slightly depending on materials and nozzle codes.
• The spread of the flat spray is parallel to the grooves.

Spray Angle Code	Spray Capacity Code	Pipe Conn. Size	Spray Angle			Spray Capacity (ℓ/min)					Mean Drop. Dia. (μm)	Free Pass. Dia. (mm)	
			0.15 MPa	0.3 MPa	0.5 MPa	0.05 MPa	0.1 MPa	0.15 MPa	0.2 MPa	0.3 MPa			0.5 MPa
65°	40	1/4M	50°	65°	70°	1.63	2.31	2.83	3.27	4.00	5.16	300 }	1.3
	50		51°	65°	70°	2.04	2.89	3.54	4.08	5.00	6.46		

Coin-shaped Standard Flat Spray Nozzles

CVVP

Registered design



[Features]

- Flat spray pattern with a mountain-shaped spray distribution having gradually tapered edges.
- In the shape of a thin coin, this nozzle does not protrude out of a pipe-surface, which makes it easy to accommodate nozzle headers in narrow spaces.

[Standard Pressure]

0.3MPa

[Applications]

Cleaning : Felts, screens, filters, wires, etc.
Spraying : Lubricants, chemicals, etc.
Cooling : Steel plates and coils, etc.

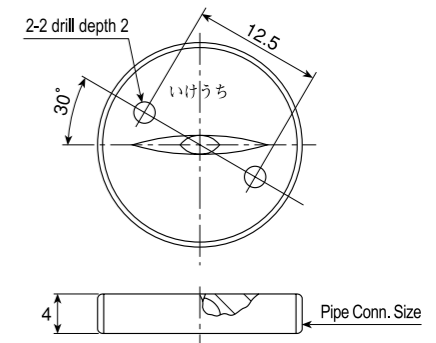
CVVP-series

CVVP-series	
Structure	• One-piece structure with threaded outside edge.
Material	• S303 (stainless steel 303) or S316 (stainless steel 316)

Series	Pipe Conn. Size	Dimensions	Mass(g)
			S303 (S316)
CVVP	M20x1	Shown at right	8.5

*Metric fine threads (JIS B 0207)

[Note] Appearance and dimensions may differ slightly depending on materials and nozzle codes.



Spray Angle Code	Spray Capacity Code	Pipe Conn. Size	Spray Angle			Spray Capacity (ℓ/min)										Mean Drop. Dia. (μm)	Free Pass. Dia. (mm)	
			0.15 MPa	0.3 MPa	0.7 MPa	0.05 MPa	0.07 MPa	0.1 MPa	0.15 MPa	0.2 MPa	0.3 MPa	0.5 MPa	0.7 MPa	1 MPa	1.5 MPa			2 MPa
90°	10	M20x1	78°	90°	99°	0.41	0.48	0.58	0.71	0.82	1.00	1.29	1.53	1.83	2.24	2.58	210	0.5
	15		79°	90°	98°	0.61	0.72	0.87	1.06	1.23	1.50	1.94	2.29	2.74	3.36	3.87		
	20		80°	90°	97°	0.82	0.97	1.15	1.41	1.63	2.00	2.58	3.06	3.65	4.47	5.16		
	30		82°	90°	96°	1.23	1.45	1.73	2.12	2.45	3.00	3.88	4.58	5.48	6.71	7.75		
	40		83°	90°	97°	1.63	1.93	2.31	2.83	3.27	4.00	5.16	6.11	7.30	8.94	10.3		
	50		83°	90°	97°	2.04	2.42	2.89	3.54	4.08	5.00	6.46	7.64	9.13	11.2	12.9		
	60		83°	90°	97°	2.45	2.90	3.46	4.24	4.90	6.00	7.75	9.17	11.0	13.4	15.5		
80	84°	90°	97°	3.27	3.86	4.62	5.66	6.53	8.00	10.3	12.2	14.6	17.9	20.6				
80°	10	M20x1	69°	80°	87°	0.41	0.48	0.58	0.71	0.82	1.00	1.29	1.53	1.83	2.24	2.58	210	0.5
	15		70°	80°	86°	0.61	0.72	0.87	1.06	1.23	1.50	1.94	2.29	2.74	3.36	3.87		
	20		71°	80°	86°	0.82	0.97	1.15	1.41	1.63	2.00	2.58	3.06	3.65	4.47	5.16		
	30		72°	80°	84°	1.23	1.45	1.73	2.12	2.45	3.00	3.88	4.58	5.48	6.71	7.75		
	40		74°	80°	83°	1.63	1.93	2.31	2.83	3.27	4.00	5.16	6.11	7.30	8.94	10.3		
	50		74°	80°	83°	2.04	2.42	2.89	3.54	4.08	5.00	6.46	7.64	9.13	11.2	12.9		
	60		74°	80°	83°	2.45	2.90	3.46	4.24	4.90	6.00	7.75	9.17	11.0	13.4	15.5		
80	74°	80°	83°	3.27	3.86	4.62	5.66	6.53	8.00	10.3	12.2	14.6	17.9	20.6				
65°	10	M20x1	53°	65°	72°	0.41	0.48	0.58	0.71	0.82	1.00	1.29	1.53	1.83	2.24	2.58	230	0.6
	15		53°	65°	72°	0.61	0.72	0.87	1.06	1.23	1.50	1.94	2.29	2.74	3.36	3.87		
	20		54°	65°	72°	0.82	0.97	1.15	1.41	1.63	2.00	2.58	3.06	3.65	4.47	5.16		
	30		55°	65°	72°	1.23	1.45	1.73	2.12	2.45	3.00	3.88	4.58	5.48	6.71	7.75		
	40		57°	65°	72°	1.63	1.93	2.31	2.83	3.27	4.00	5.16	6.11	7.30	8.94	10.3		
	50		58°	65°	72°	2.04	2.42	2.89	3.54	4.08	5.00	6.46	7.64	9.13	11.2	12.9		
	60		59°	65°	72°	2.45	2.90	3.46	4.24	4.90	6.00	7.75	9.17	11.0	13.4	15.5		
80	62°	65°	72°	3.27	3.86	4.62	5.66	6.53	8.00	10.3	12.2	14.6	17.9	20.6				

How to order

Please inquire or order for a specific nozzle using this coding system.

<Example>... 1/4MUVVP6540UPE

1/4M UVVP 65 40 UPE

Spray Capacity Code
40
50

How to order

Please inquire or order for a specific nozzle using this coding system.

<Example>...M20x1 CVVP 9010 S303

M20x1 CVVP 90 10 S303

Spray Angle Code
90°
80°
65°
Spray Capacity Code
10
50
80
Material
S303
S316