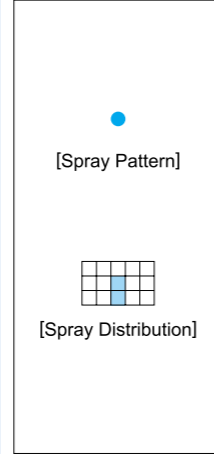
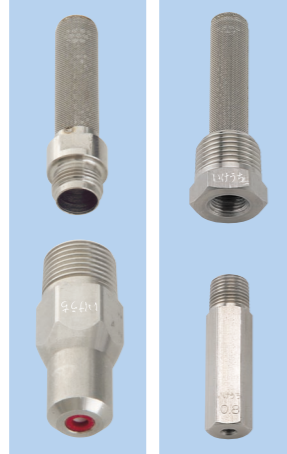


Paper Trimming Nozzles

CMP-T / CTM / CM



[Features]
 • Extra fine and clear non-turbulent solid stream nozzles with high impact cutting force.

[Standard Pressure]
 1MPa

[Applications]
 Trimming : Paper making, asbestos plate, etc.
 Cutting : Timber, food
 Others : Cleaning of precision machine parts, injection of chemicals, deburring, foaming of beer (jet foamer), etc.

CMP-T series

CMP-T series (with high-purity alumina orifice inserted)

Structure
 • High-purity alumina ceramic orifice is inserted into a sleeve of strong engineering plastics.
 • Comprises two parts: nozzle, adaptor-strainer. Worn-out nozzles can be replaced separately.

Material
 • Spray orifice : 99.5% alumina
 • Sleeve : PA (polyamide)
 • Metal parts : S303 (stainless steel 303)
 • O-ring : NBR

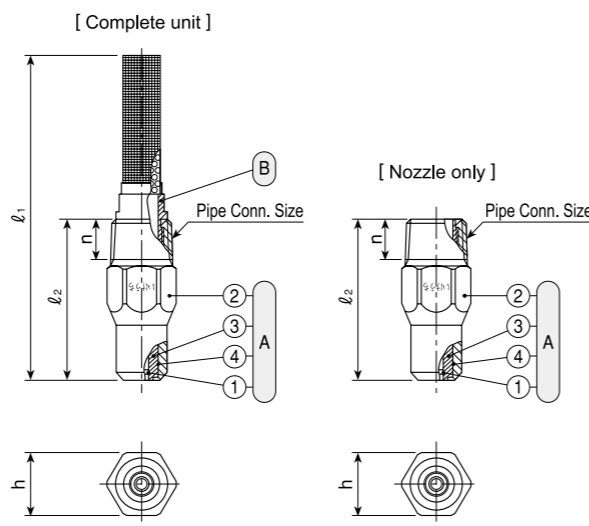
[Complete unit]

Series	Pipe Conn. Size	Dimensions(mm)				Mass (g)
		l ₁	l ₂	h	n	
CMP-T	3/8M	89	44	17	11	47

[Nozzle only]

Series	Pipe Conn. Size	Dimensions(mm)			Mass (g)
		l ₂	h	n	
CMP-T	3/8M	44	17	11	40

[Note] Appearance and dimensions may differ slightly depending on materials and nozzle codes.



① Nozzle (① 99.5% Alumina orifice ② Body ③ Sleeve ④ O-ring-NBR)
 ② Strainer

* Adaptor and strainer are not detachable.

CTM-series

CTM-series (with tungsten carbide orifice inserted)

Structure
 • Tungsten carbide orifice insert for longer life.
 • Comprises two parts : Nozzle, adaptor-strainer. Worn-out nozzles can be replaced separately.

Material
 • Spray orifice : tungsten carbide
 • Metal parts : S303 (stainless steel 303)

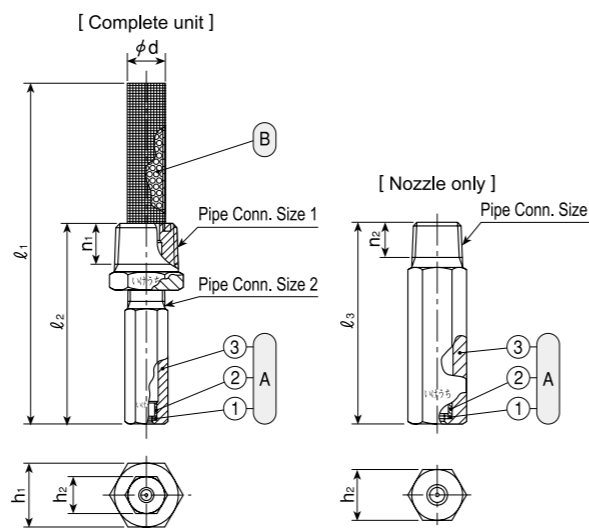
[Complete unit]

Series	Orifice Dia. Code	Pipe Conn. Size 1	Pipe Conn. Size 2	Dimensions(mm)						Mass (g)
				l ₁	l ₂	h ₁	h ₂	φd	n ₁	
CTM	φ0.2~φ0.9	3/8M	1/8M	92	54	17	10	10	11	39
	φ1.0~φ1.5	3/8M	1/4M	90	52	17	14	10	11	47

[Nozzle only]

Series	Orifice Dia. Code	Pipe Conn. Size 2	Dimensions(mm)			Mass (g)
			l ₃	h ₂	n ₂	
CTMP	φ0.2~φ0.9	1/8M	40	10	7	16.5
	φ1.0~φ1.5	1/4M	40	14	10.5	30

[Note] Appearance and dimensions may differ slightly depending on materials and nozzle codes.



① Nozzle (① Tungsten carbide orifice ② Sleeve ③ Body)
 ② Strainer (Adaptor-strainer)

* Adaptor and strainer are not detachable.

Paper Trimming Nozzles CMP-T / CTM / CM-series

CM-series

CM-series (with ceramic or sapphire orifice inserted)

Structure
 • Ceramic orifice or sapphire orifice insert for longer life.
 • Comprises two parts : nozzle, adaptor-strainer. Worn-out nozzles can be replaced separately.

Material
 • Spray orifice : ceramic or sapphire
 • Metal parts : B (brass) or S303 (stainless steel 303)

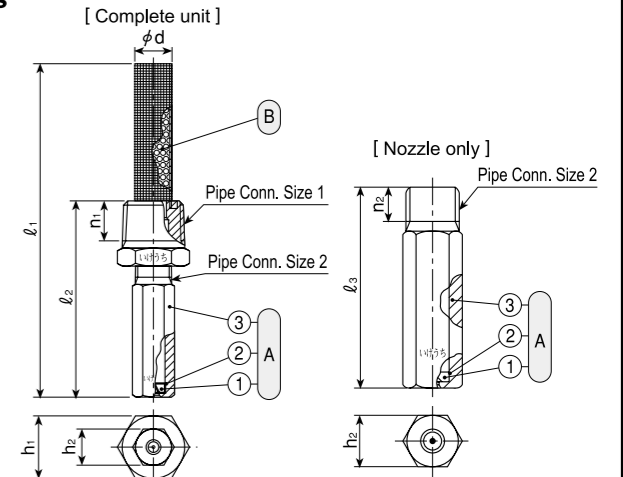
[Complete unit]

Series	Orifice Dia. Code	Pipe Conn. Size 1	Pipe Conn. Size 2	Dimensions(mm)						Mass(g)	
				l ₁	l ₂	h ₁	h ₂	φd	n ₁	B	S303
CM	φ0.1~φ0.9	3/8M	1/8M	92	54	17	10	10	11	42	39
	φ1.0~φ1.5	3/8M	1/4M	90	52	17	14	10	11	51	47

[Nozzle only]

Series	Orifice Dia. Code	Pipe Conn. Size 2	Dimensions(mm)			Mass(g)	
			l ₃	h ₂	n ₂	B	S303
CMP	φ0.1~φ0.9	1/8M	40	10	7	18	16.5
	φ1.0~φ1.5	1/4M	40	14	10.5	33	30

[Note] Appearance and dimensions may differ slightly depending on materials and nozzle codes.



① Nozzle (① Ceramic or Sapphire orifice ② Adhesive : Araldite® ③ Body)
 ② Strainer (Adaptor-strainer)

* Adaptor and strainer are not detachable.

Orifice Diameter Code	CMP-T 3/8M High alumina orifice	CTM 3/8M Tungsten carbide orifice	CM		Spray Capacity (ℓ/min)						Strainer Mesh Size
			3/8M Ceramic orifice	3/8M Sapphire orifice	0.5 MPa	1 MPa	2 MPa	3 MPa	4 MPa	5 MPa	
φ0.1			●	●	0.011	0.016	0.022	0.027	0.031	0.035	200
φ0.15			●	●	0.03	0.04	0.05	0.06	0.07	0.08	200
φ0.2			●	●	0.05	0.06	0.09	0.11	0.12	0.14	200
φ0.25			●	●	0.07	0.10	0.14	0.17	0.19	0.21	200
φ0.3	●	●	●	●	0.10	0.14	0.19	0.23	0.27	0.30	150
φ0.4	●	●	●	●	0.17	0.24	0.34	0.41	0.47	0.52	150
φ0.5	●	●	●	●	0.25	0.35	0.49	0.60	0.68	0.76	80
φ0.6	●	●	●	●	0.36	0.51	0.71	0.86	0.99	1.10	80
φ0.7	●	●	●	●	0.49	0.69	0.96	1.17	1.34	1.49	50
φ0.8	●	●	●	●	0.65	0.90	1.26	1.53	1.75	1.95	50
φ0.9	●	●	●	●	0.78	1.09	1.52	1.84	2.11	2.35	50
φ1.0	●	●	●	●	0.97	1.34	1.88	2.28	2.61	2.91	50
φ1.1		●	●	●	1.17	1.63	2.27	2.75	3.16	3.51	50
φ1.2		●	●	●	1.39	1.94	2.70	3.28	3.76	4.18	50
φ1.3		●	●	●	1.63	2.27	3.17	3.85	4.41	4.91	50
φ1.4		●	●	●	1.89	2.64	3.68	4.46	5.12	5.69	50
φ1.5		●	●	●	2.17	3.03	4.22	5.12	5.88	6.54	50

* The above nozzles are manufactured for designated orifice diameters, therefore spray capacity is not guaranteed.

CMP-T series (with high-purity alumina orifice inserted)

How to order Please inquire or order for a specific nozzle using this coding system.

① Complete unit	② Nozzle only
3/8M CMP φ0.3 T S303W	3/8M CMP φ0.3 T S303
Orifice Diameter Code φ0.3 φ0.4 φ1.0	Orifice Diameter Code φ0.3 φ0.4 φ1.0

CTM-series (with tungsten carbide orifice inserted)

How to order Please inquire or order for a specific nozzle using this coding system.

① Complete unit	② Nozzle only
3/8M CTM φ0.2 S303W (PM-Strainer φ10)	1/8M CTMP φ0.2 S303
Orifice Diameter Code φ0.2 φ0.3 φ1.5	Size 1/8M 1/4M Orifice Diameter Code φ0.2 φ0.3 φ1.5

CM-series (with ceramic or sapphire orifice inserted)

How to order Please inquire or order for a specific nozzle using this coding system.

① Complete unit	② Nozzle only
(Example) ... 3/8M CM φ0.1B W	(Example) ... 1/8M CMP φ0.1B
Orifice Diameter Code φ0.1 φ0.2 φ1.5	Size 1/8M 1/4M Orifice Diameter Code φ0.1 φ0.2 φ1.5
Material B S303 Sa-B Sa-S303	Material B S303 Sa-B Sa-S303
Orifice material Ceramic Sapphire	Orifice material Ceramic Sapphire