

# Wide angle full cone spray nozzles

## SW SERIES

### SPRAY CHARACTERISTICS:

A wide angle full cone spray pattern, with uniform distribution throughout the cone.

### CONSTRUCTION:

This nozzle contains a patented insert with larger flow passages than older styles, and is less susceptible to clogging. Standard materials are brass, 303 stainless steel and 316 stainless steel. Some models are also stocked in PVC,

C PVC and polypropylene.

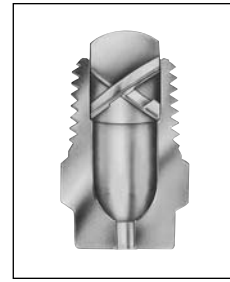
For molded plastic models, please see page 29.

### TYPICAL APPLICATIONS:

Anywhere a wide angle full cone spray is required:

- Chemical Processing
- Cooling Sprays
- Continuous Casting

U.S. Patent No. 4,142,682  
Canadian Patent No. 1,050,589

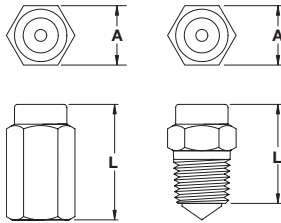


## SW SERIES

One piece body + non-removable insert

### DIMENSIONS

MALE SIZE (BSPT)	Dim. A (mm)	Dim. L (mm)	FEMALE SIZE (BSPT)	Dim. A (mm)	Dim. L (mm)
1/8SW	1 HEX	21	3/8FSW	32 HEX	60
1/4SW	14 HEX	24	1FSW	38 HEX	64
3/8SW	17 HEX	27	1 1/8FSW	48 HEX	89
1/2SW	22 HEX	37	1 1/2FSW	57 Dia.	108
3/4SW	32 HEX	30	2FSW	70 Dia.	149
1SW	35 dia.	52	2 3/4FSW	89 Dia.	165
			3FSW	102 Dia.	197
			4FSW	127 Dia.	267

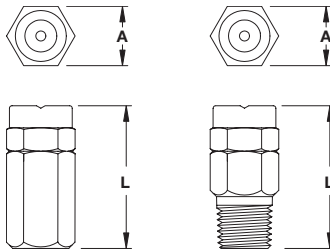


## GSW SERIES

Two piece body + removable insert

### DIMENSIONS

NOZZLE SIZE (BSPT)	Dim. A (mm)	Dim. B (mm)
1/8GSW	16 HEX	33
1/4GSW	18 HEX	40
3/8GSW	21 HEX	43
1/2GSW	25 HEX	51
1/8FGSW	16 HEX	33
1/4FGSW	18 HEX	42
3/8FGSW	21 HEX	49
1/2FGSW	25 HEX	53



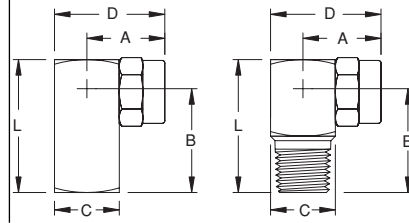
## HGSW SERIES

Two piece body + removable insert.

Sprays at right angle to pipe.

### DIMENSIONS

NOZZLE SIZE (BSPT)	Dim. A (mm)	Dim. B (mm)	Dim. C (mm)	Dim. D (mm)	Dim. L (mm)
1/8HGSW	18	18	16 SQ	26	25
1/4HGSW	23	25	18 SQ	33	35
3/8HGSW	26	27	21 SQ	38	39
1/2HGSW	30	35	26 SQ	43	48
1/8FHGSW	17	18	16 SQ	23	25
1/4FHGSW	23	25	18 SQ	33	35
3/8FHGSW	26	27	21 SQ	38	39
1/2FHGSW	30	35	26 SQ	43	48



FULL CONE SPRAY

'SW' one piece body	'GSW' two piece body		'HGSW' right angle, two piece body		PIPE SIZE BSPT	MAXIMUM FREE PASSAGE (mm)	CAPACITY (L/min) AT VARIOUS PRESSURES (bar)										Spray Angle @			
	FEMALE	MALE	FEMALE	MALE			FEMALE	MALE	0.3 bar	0.5 bar	0.7 bar	1 bar	1.5 bar	2 bar	3 bar	4 bar	5 bar	6 bar	8 bar	0.5 bar
	1/8S2.8W	1/8FGS2.8W	1/8GS2.8W	1/8HGS2.8W	1/8	1.30	--	0.90	1.07	1.28	1.56	1.80	2.21	2.55	2.85	3.13	3.6	110°	105°	96°
	1/8S4.3W	1/8FGS4.3W	1/8GS4.3W	1/8HGS4.3W	1/8	1.30	--	1.39	1.64	1.96	2.40	2.77	3.4	3.9	4.4	4.8	5.5	117°	108°	100°
	1/8S5.6W	1/8FGS5.6W	1/8GS5.6W	1/8HGS5.6W	1/8	1.63	--	1.80	2.14	2.55	3.13	3.6	4.4	5.1	5.7	6.3	7.2	117°	110°	100°
	1/8S8W	1/8FGS8W	1/8GS8W	1/8HGS8W	1/8	2.06	2.00	2.58	3.05	3.6	4.5	5.2	6.3	7.3	8.2	8.9	10.3	118°	110°	103°
	1/4S5.6W	1/4FGS5.6W	1/4GS5.6W	1/4HGS5.6W	1/4	1.63	1.40	1.80	2.14	2.55	3.13	3.6	4.4	5.1	5.7	6.3	7.2	120°	108°	102°
	1/4S10W	1/4FGS10W	1/4GS10W	1/4HGS10W	1/4	2.31	2.50	3.2	3.8	4.6	5.6	6.4	7.9	9.1	10.2	11.2	12.9	118°	108°	102°
	1/4S12W	1/4FGS12W	1/4GS12W	1/4HGS12W	1/4	2.31	3.00	3.9	4.6	5.5	6.7	7.7	9.5	10.9	12.2	13.4	15.5	112°	102°	102°
	1/4S14W	1/4FGS14W	1/4GS14W	1/4HGS14W	1/4	2.31	3.5	4.5	5.3	6.4	7.8	9.0	11.1	12.8	14.3	15.6	18.0	118°	114°	104°
	3/8S17W	3/8FGS17W	3/8GS17W	3/8HGS17W	3/8	2.59	4.2	5.5	6.5	7.7	9.5	11.0	13.4	15.5	17.3	19.0	21.9	118°	117°	102°
	3/8S20W	3/8FGS20W	3/8GS20W	3/8HGS20W	3/8	2.59	5.0	6.4	7.6	9.1	11.2	12.9	15.8	18.2	20.4	22.3	25.8	120°	120°	106°
	3/8S24W	3/8FGS24W	3/8GS24W	3/8HGS24W	3/8	2.59	6.0	7.7	9.2	10.9	13.4	15.5	18.9	21.9	24.5	26.8	30.9	122°	118°	106°
	3/8S27W	3/8FGS27W	3/8GS27W	3/8HGS27W	3/8	2.59	6.7	8.7	10.3	12.3	15.1	17.4	21.3	24.6	27.5	30.1	35	122°	120°	107°
	1/2S30W	1/2FGS30W	1/2GS30W	1/2HGS30W	1/2	3.66	7.5	9.7	11.4	13.7	16.7	19.3	23.7	27.3	30.6	33	39	120°	118°	110°
	1/2S35W	1/2FGS35W	1/2GS35W	1/2HGS35W	1/2	3.66	8.7	11.3	13.3	16.0	19.5	22.6	27.6	32	36	39	45	122°	118°	108°
	1/2S40W	1/2FGS40W	1/2GS40W	1/2HGS40W	1/2	4.11	10.0	12.9	15.3	18.2	22.3	25.8	32	36	41	45	52	122°	119°	104°
	1/2S45W	1/2FGS45W	1/2GS45W	1/2HGS45W	1/2	4.11	11.2	14.5	17.2	20.5	25.1	29.0	36	41	46	50	58	141°	118°	108°
	3/4FS50W	3/4S50W			3/4	4.95	12.5	16.1	19.1	22.8	27.9	32	39	46	51	56	64.5	120°	120°	110°
	3/4FS71W	3/4S71W			3/4	4.95	17.7	22.9	27.1	32	40	46	56	65	72	79	92	118°	120°	112°
	1FS13W	1S13W			1	5.56	32	42	50	59	73	84	103	119	132	145	168	120°	125°	118°
	1 1/4FS19W				1 1/4	6.60	47	61	72	87	106	122	150	173	194	212	245	122°	123°	120°
	1 1/2FS29W				1 1/2	8.36	72	93	111	132	162	187	229	264	296	324	374	125°	125°	120°
	2FS56W				2	11.1	140	180	214	255	313	361	442	510	571	625	722	125°	125°	118°
	2 1/2FS83W				2 1/2	13.5	207	267	317	378	463	535	655	757	846	927	1070	122°	123°	120°
	3FS107W				3	17.5	267	345	408	488	597	690	845	975	1090	1195	1379	125°	123°	123°
	4FS165W				4	22.2	412	532	629	752	921	1064	1303	1504	1682	1842	2127	125°	125°	123°